

MODEL SHOP OPEN HOUSE

Prototyping and Fabrication Facilities

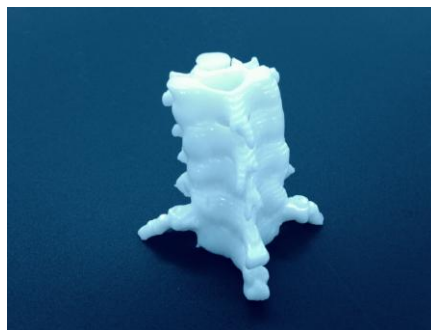
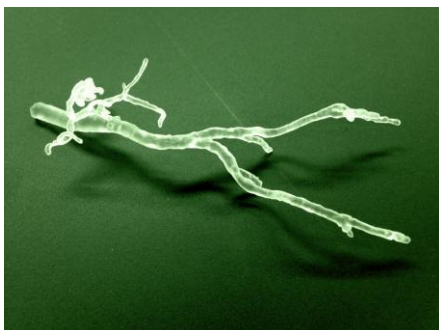
The MGH Department of Biomedical Engineering's Model Shop will be hosting an open house to showcase its capabilities in design, machining, and fabrication.

Dates: **Wednesday, June 21, 1-4 pm**
 Thursday, June 22, 1-4 pm

Location: **Ruth Sleeper Hall, Room 070, MGH main campus**
(corner of Parkman St. and Blossom St., across from the Wyndham Hotel)

MGH Biomedical Engineering offers highly specialized prototyping and fabrication facilities that provide custom designs and tooling to meet the needs of researchers and clinicians within MGH and Partners.

Our services include the manufacturing of one-of-a-kind products, design and development of models, product customization, CAD services, equipment repairs, and **3D printing**.



Reservations are not required but RSVPs are encouraged: modelshop@partners.org

For more information visit our website: **biomed.partners.org/modelshop**